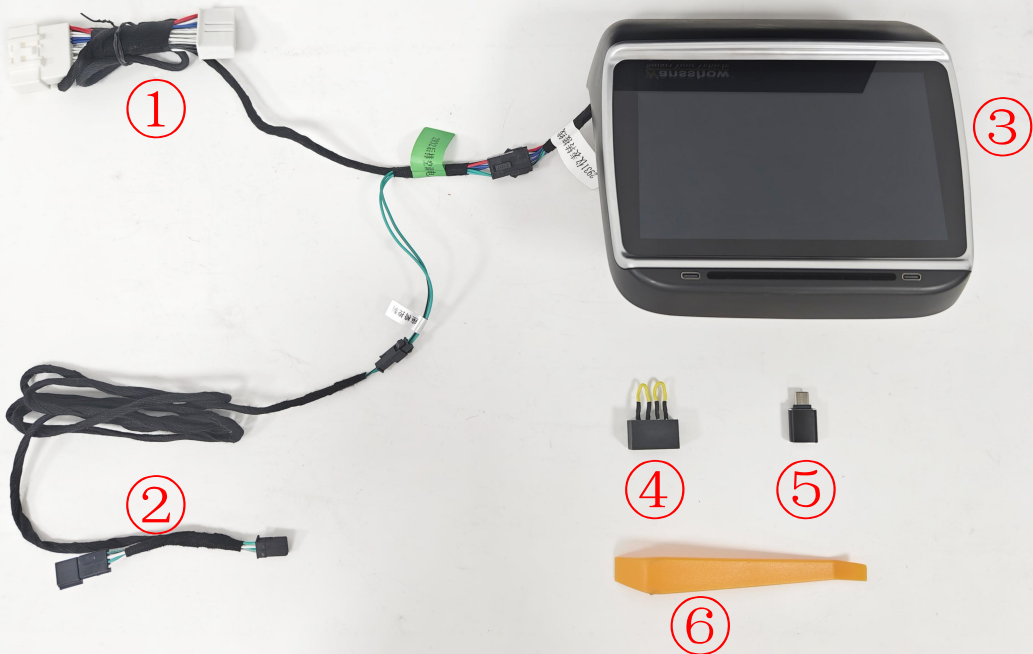


Model 3/Y 7.2” Rear Entertainment & Climate Control Display Installation Instruction

Product List



①	CANbus Adapter Plug	④	Plug for Model Y
②	Passenger Seat Control Wire	⑤	USB Adapter
③	7.2” Display	⑥	Pry tool

1. Tools required for installation

Plastic pry tool

2. Installation precautions

- Screen power needs to be turned off before installation

Tip: In order to install more quickly, please read the instructions carefully.

* Due to the different time zones in each country, please manually set the correct time. The specific setting steps are as follows:

Click "Android App" ->"Android Settings"->"Date and Time"->"Automatically confirm date and time->Close"->"Set local correct time"

Inspection Before And After Installation

NOTE

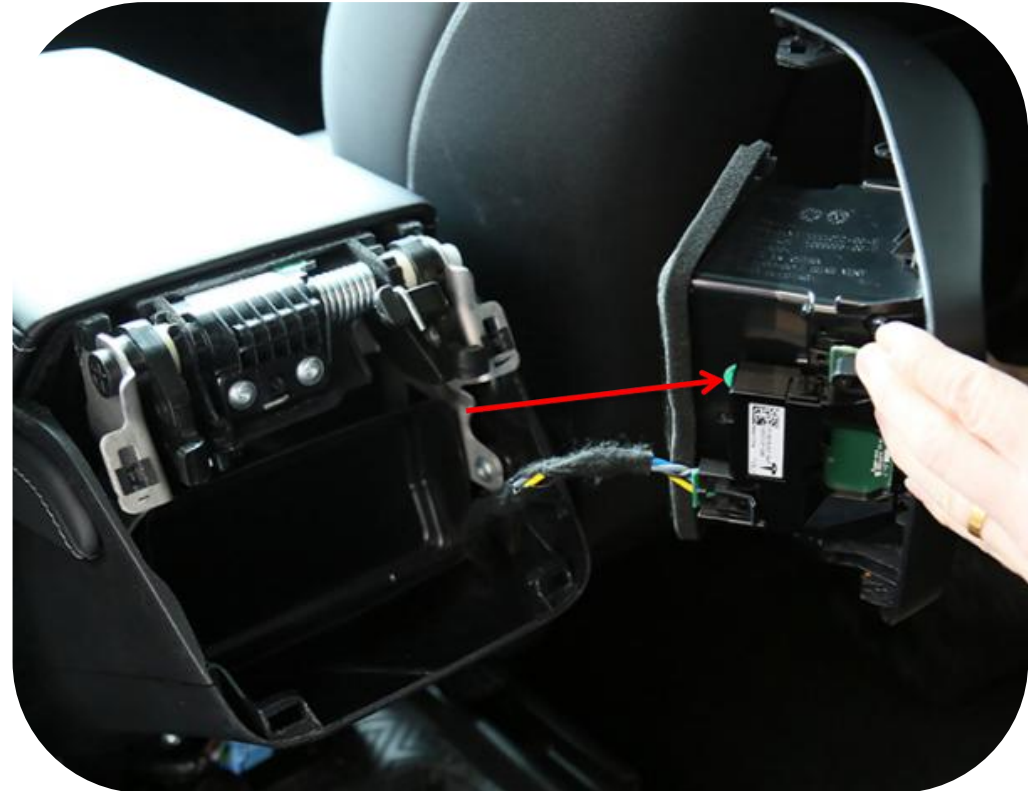
1. Check whether the product list is complete and damaged before installation
2. The installation instructions may be slightly different from the actual operation. If there is any difference, please contact us or according to the actual situation.
3. Warning: Do not remove any parts by yourself. Any improper operation is not covered by the warranty.
4. Before installing the product, please turn off the vehicle power and cut off the battery negative pole of the frunk
5. Please watch the installation video and instructions carefully before installation
6. Please confirm whether the installation and wiring are correct before testing after installation.
7. Check whether the installed product functions normally. If there is any problem, please check whether the plug is plugged tightly
8. Check whether the function of the original vehicle is used normally. If there is any problem, please check whether the plug is plugged in tightly.
9. Please do not install the product if you receive a damaged item. Please take photos immediately and provide them to our after-sales team for confirmation. Photos should be provided that include all parts of the product and can display the damage. (If the product is notified of the damage after installation, claims and reissues will not be accepted, and you will need to purchase the parts again at your own expense.)

Installation Steps



1. At the bottom of the rear vent outlet, pry open and remove the plastic baffle

Installation Steps



2. Use the prybar to pry open the air outlet of the original vehicle and take it off

Installation Steps



3. Unplug the harness interface of the original USB charging module

Installation Steps



4. Take out the harness in the packaging box, put the black interface through the gap at the bottom left of the airoutlet, and pull it out from above

Installation Steps



5. Connect the seat adjustment harness to the green plug, and then pull the harness to the passenger seat

Installation Steps



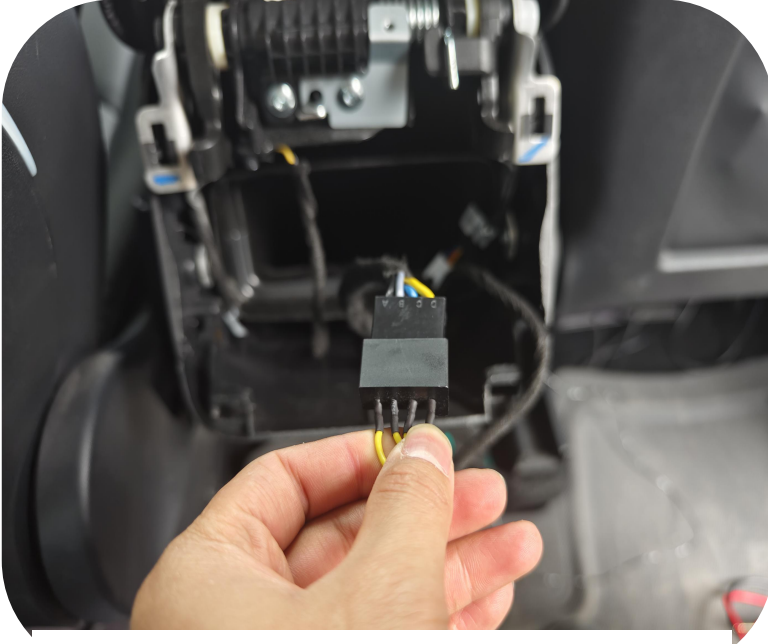
6. At the side of the rear co-driver, pry off the seat adjustment baffle with a pry plate and pull off the plug, then connect with the adapter plug.

Installation Steps



7. Turn off the power on the main screen; Unplug the blue CANbus harness of the original vehicle; Connect the white CANbus adapter plug; And then install the plastic baffle back to the original vehicle

Installation Steps



Special for Model Y
(Model 3 no need to connect this plug)



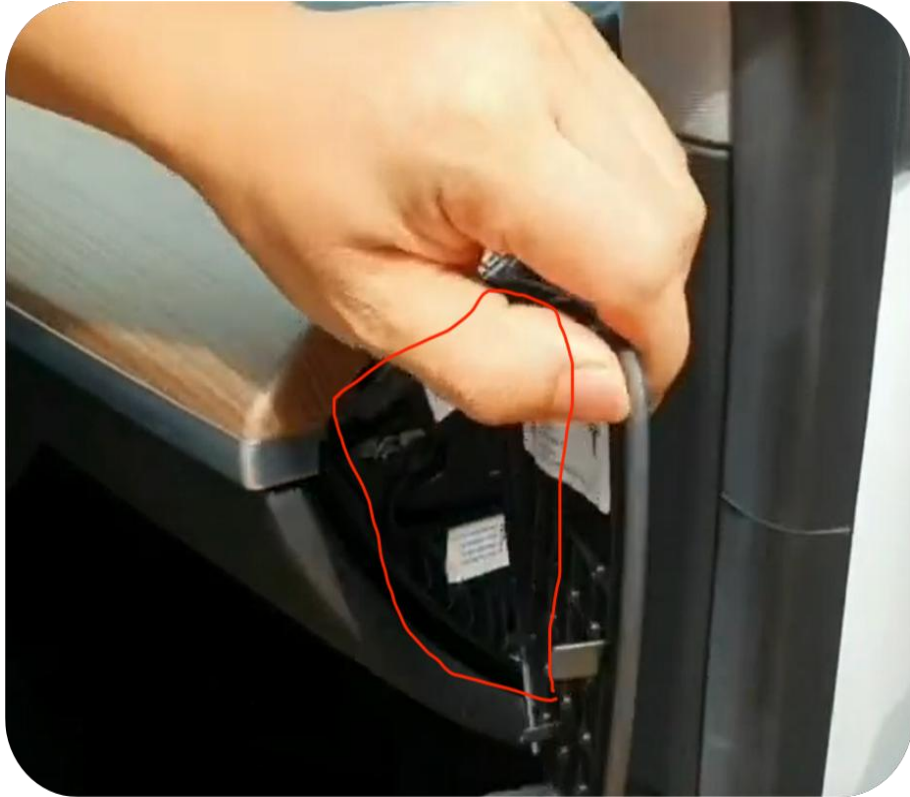
8. Take out the 7.2" screen in the packaging box and plug in the power cable and USB charging control cable of the screen respectively. Remove the built-in clips and first attach the screen frame from the top, then attach it from the bottom

Installation Steps



9. Place the harnesses into the area below the air outlet, and finally install the screen back to original position

Installation Steps - **Model Y 2023/02+ Standard Range (Made in USA)**



1. Remove this triangular trim panel

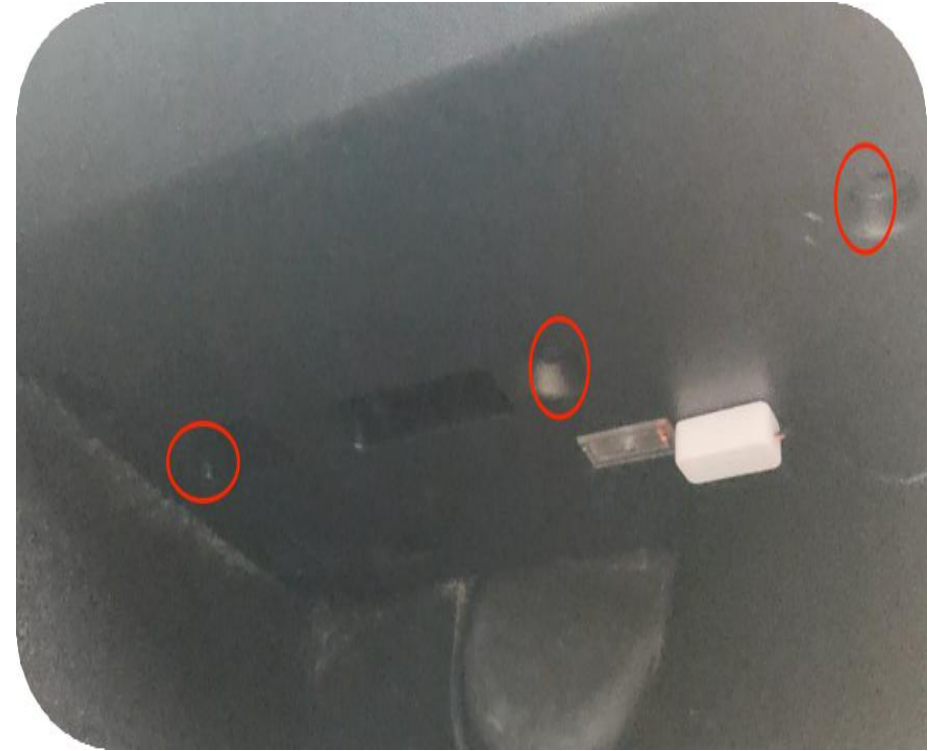


2. Pull open the strip and remove this trim panel

Installation Steps - **Model Y 2023/02+ Standard Range (Made in USA)**



3. Remove this clip and take out the kick guard trim panel



4. Remove the passenger side lower cover (left side clip, right side screw)

Installation Steps - **Model Y 2023/02+ Standard Range (Made in USA)**



5. After removing the clip, pull it to the left



6. Use a pry bar to open the center console side trim panel

Installation Steps - **Model Y 2023/02+ Standard Range (Made in USA)**

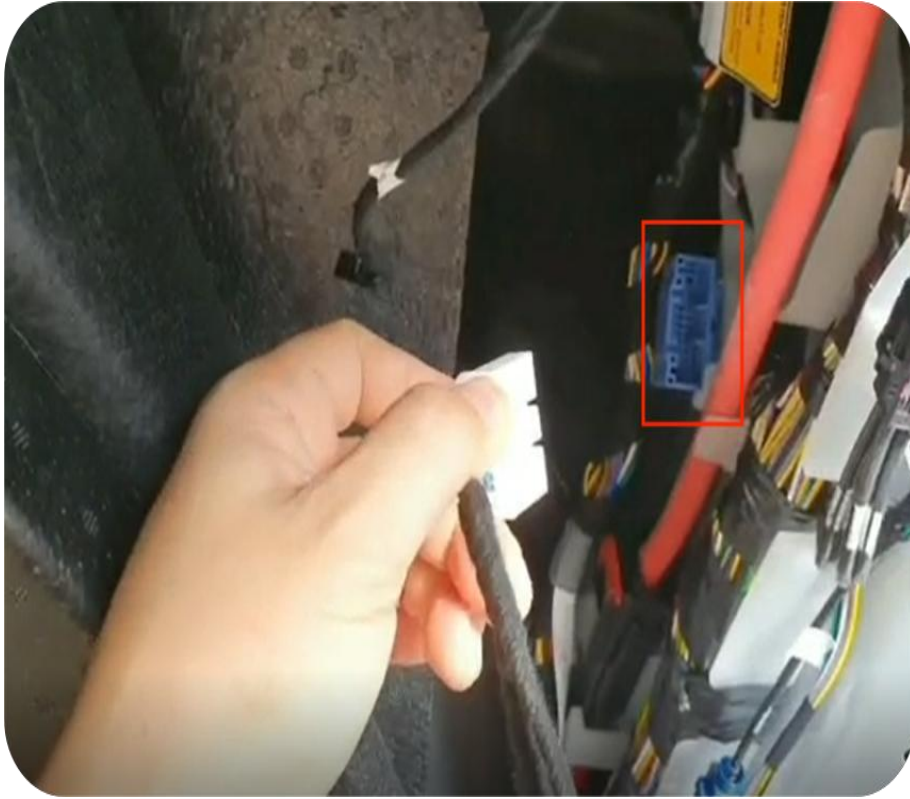


7. Remove the wireless charging plug

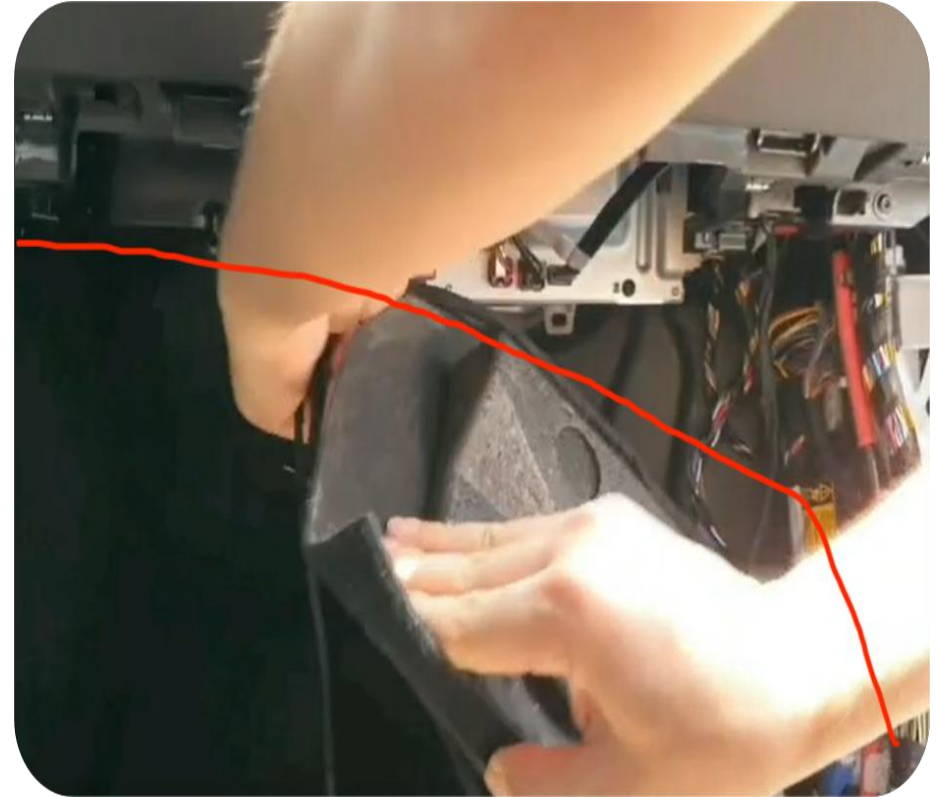


8. Connect the power cable adapter to the wireless charging plug

Installation Steps - **Model Y 2023/02+ Standard Range (Made in USA)**



9. Connect the protocol cable to the blue plug on the right side of the passenger seat



10. Route the wiring along the edge of the lower cover panel

Installation Steps - **Model Y 2023/02+ Standard Range (Made in USA)**

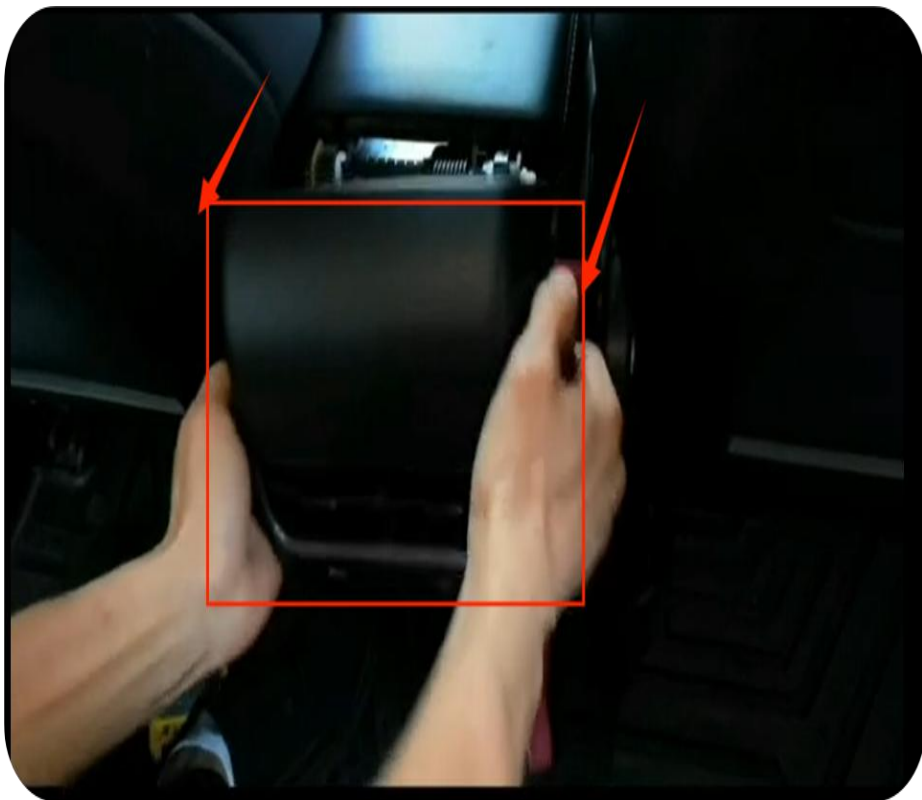


11. Lead the wiring from the lower cover panel to the center console

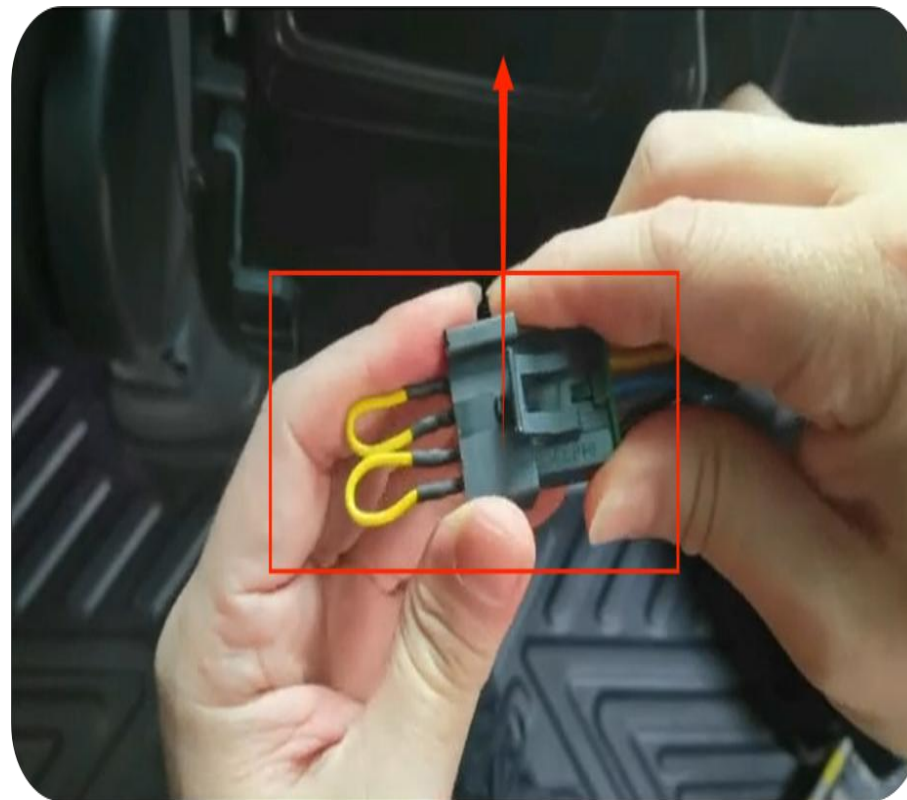


12. Run the power wire from the center console side position towards the rear

Installation Steps - **Model Y 2023/02+ Standard Range (Made in USA)**

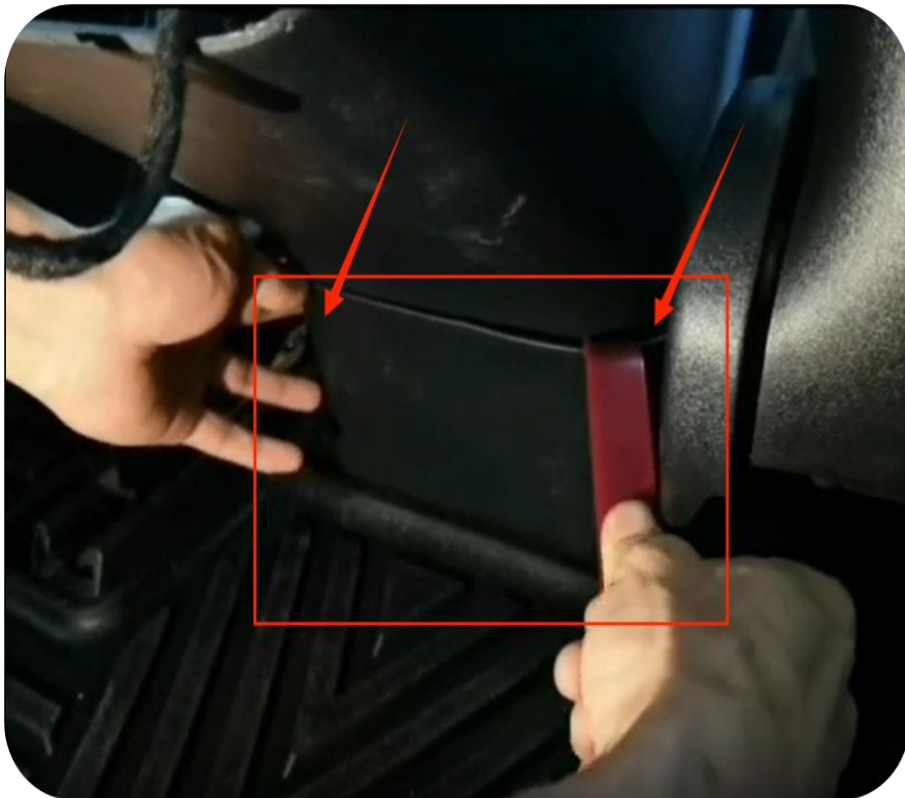


13. Remove the rear AC cover



14. After plugging in the dedicated plug for the Model Y, insert it into the air vent

Installation Steps - **Model Y 2023/02+ Standard Range (Made in USA)**

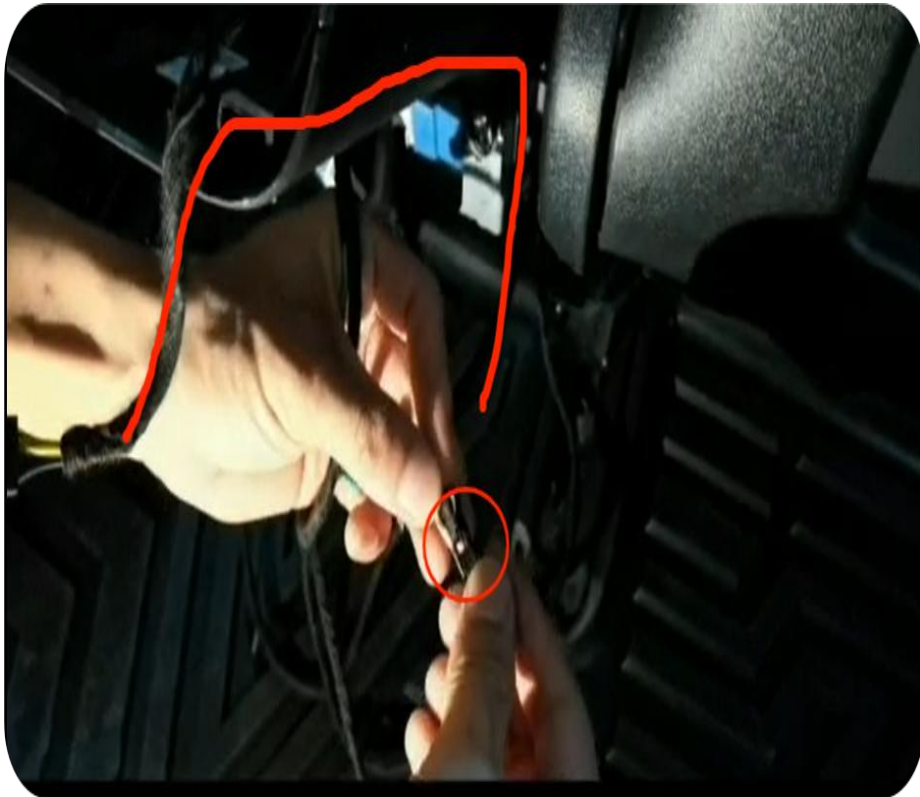


15. Remove this kick guard trim panel

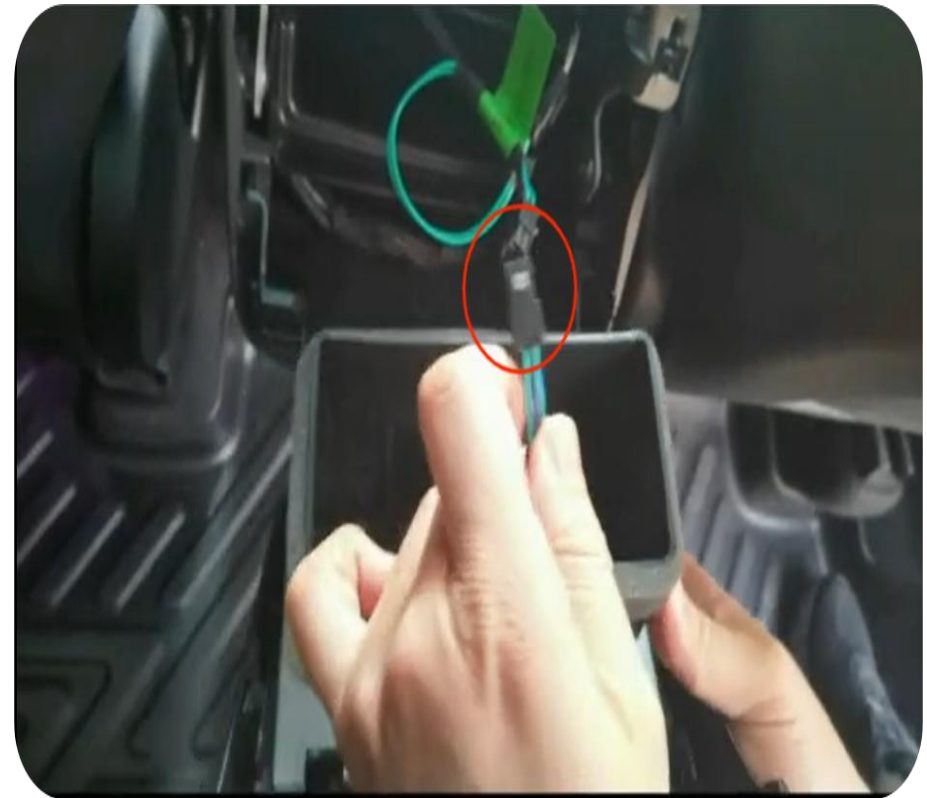


16. Connect the seat adjustment harness and route the harness from the back of the seat

Installation Steps - **Model Y 2023/02+ Standard Range (Made in USA)**



17. After connecting the harness, route the main harness from bottom to top for connection



18. After connecting the power cable to the screen, restore the vehicle to its original state