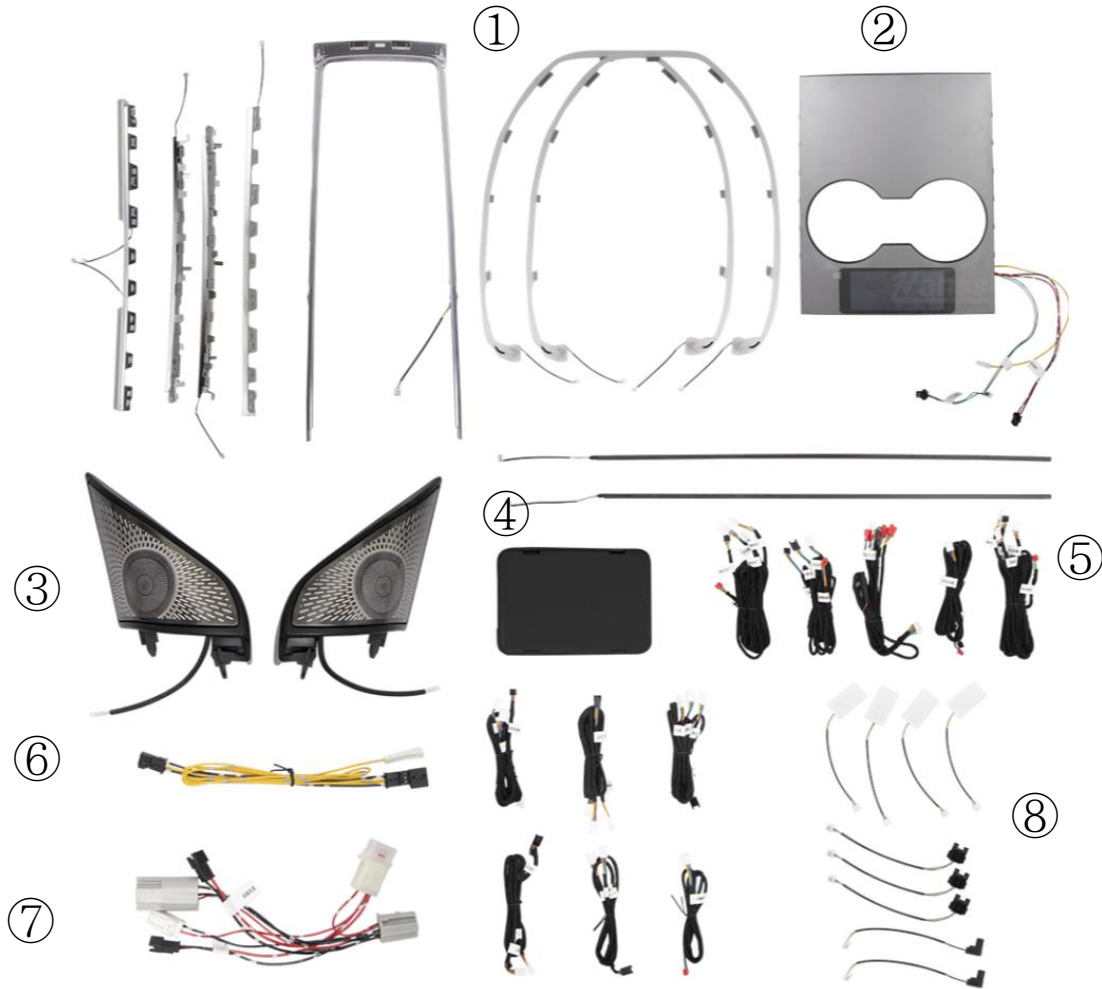


Parts List

Parts list diagram



①	Laser carving light strip	③	Speaker cover
②	Control panel	④	Main control box
⑤	Ambient light wiring harness	⑥	ACC signal wiring harness
⑦	Cigarette lighter adapter wiring harness	⑧	Footwell and Storage box lights

1. Tools required for installation

Trim Removal Tool ; Threading wire; T30, T20 and 8mm, 10mm socket

2. Installation precautions :

Please ensure that the power is turned off to prevent malfunctions.

Tip : For faster installation, be sure to read these instructions carefully.

Disclaimer and Notes

Warnings and Disclaimers

Important notice: Welcome to purchase our company's products. In order to protect the legitimate rights and interests of users, we hereby remind users that you must carefully read and fully understand the terms of this statement before using this product. If you use this product, your use will be deemed to be an acknowledgment of the entire content of this statement, and you agree to be bound by the following terms of this statement, and at the same time bear the consequences caused by irregular use. Hansshow Company reserves the right to update the above documents. Please be sure to operate this product according to the instructions.

Precautions for use

1. Before installation, check whether the product list is complete and damaged.
2. The installation instructions may be slightly different from the actual operation. If there is any difference, please contact us according to the actual situation.
3. Warning: Please do not disassemble any parts by yourself. Any improper operation is not covered by the warranty.
4. Before installing the product, watch the installation video and instructions.
5. Check whether the installed product functions normally.

Laser Carving Ambient Light – Product Highlights



Lossless installation

HD screen control

Monochrome Adjustment

Gradient Mode

Groove Pattern

Strobe Mode

Dimming

Breathing Pattern

128 Color Adjustment

Laser engraving

Year: 21+Model 3/Y

Name: Laser Carving Ambient Light - V5 Version - LHD

Left and Right Drive: Distinction

Features

1. Installation: Dedicated to special vehicles, **non-destructive installation, does not affect the functions of the original vehicle**
2. Experience: Multiple lamp positions create a romantic atmosphere, and the cool colored lights instantly create a sense of fashion and create a romantic atmosphere.
3. Function: 128 color adjustment, multiple mode switching, high-definition screen control, brightness adjustment, multiple lamp position control, made by laser engraving with low power consumption

Product Description

- 1) Specially used for special vehicles, original vehicle agreement, **non-destructive installation**, no damage to the original vehicle wiring harness and functions.
- 2) Multiple lamp positions create a romantic atmosphere. The cool colored lights instantly create a sense of fashion and create a romantic atmosphere.
- 3) In the smart era, **128 color adjustments**: Customize any light color and adjust it at will; support **high-definition screen control mode** (gradient mode, rhythm mode, monochrome mode, jump mode, strobe mode, adjustment mode, brightness adjustment); **brightness adjustment** (adjust different brightness according to needs) **multiple lamp position control** (four-door outline lamp, central control penetrating lights, laser carved saddle lights, footrest lights, storage box lights, backrest lights, tweeter lights); the light is soft and gentle not dazzling, the 128-color variable interior colorful ambient lighting makes the ambient lighting in the car extra warm and affectionate in the dark. adjustment; **laser engraving, low power consumption** (using laser engraving technology, 45,000 luminous holes, laser engraving and drilling, ultra-low power consumption) Power consumption is only 6W.

Note: The main difference between Model 3 and Model Y is that the tweeter light-emitting cover is different.

Laser Engraved Ambient Light Instructions



1. Remove the saddle trim panel



2. Lift up the wireless charging panel (Note that there is a wireless charging plug inside)



3. Press and hold the plug buckle and then unplug the wireless charging plug.



4. Diagram of the plug after unplugging it

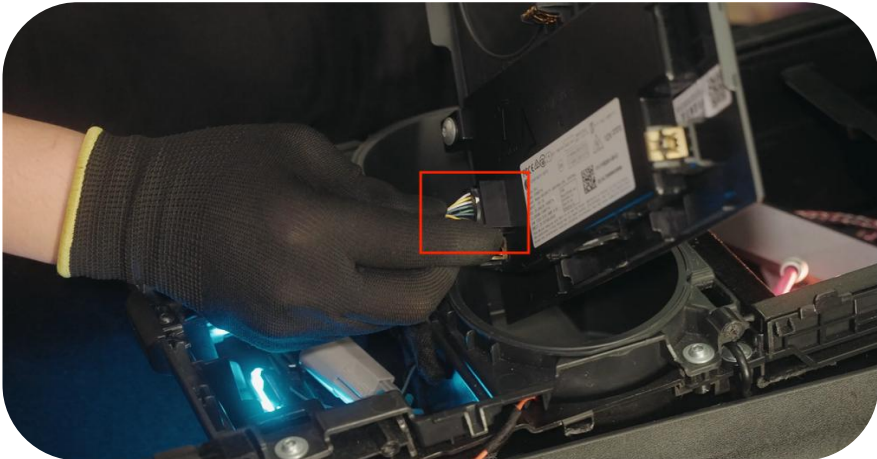
Laser Engraved Ambient Light Instructions



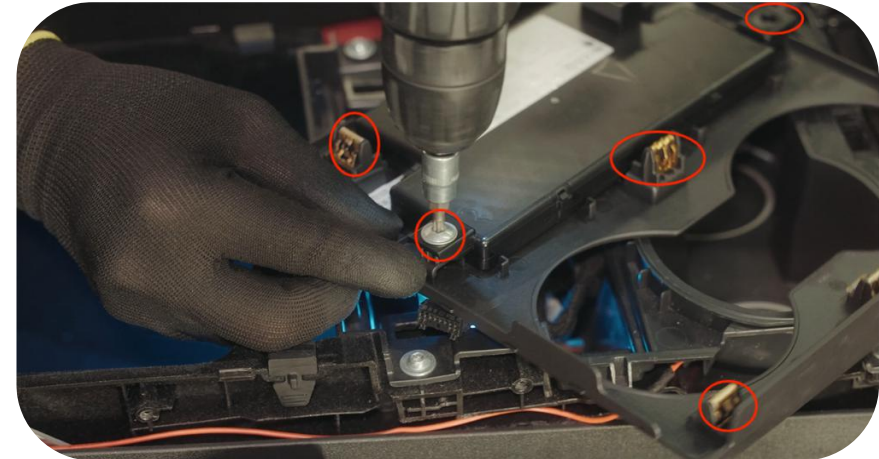
5. Unscrew the fixing screws on the left and right sides of the saddle chrome strip



6. Remove the identification card door panel (note that there is a plug inside)

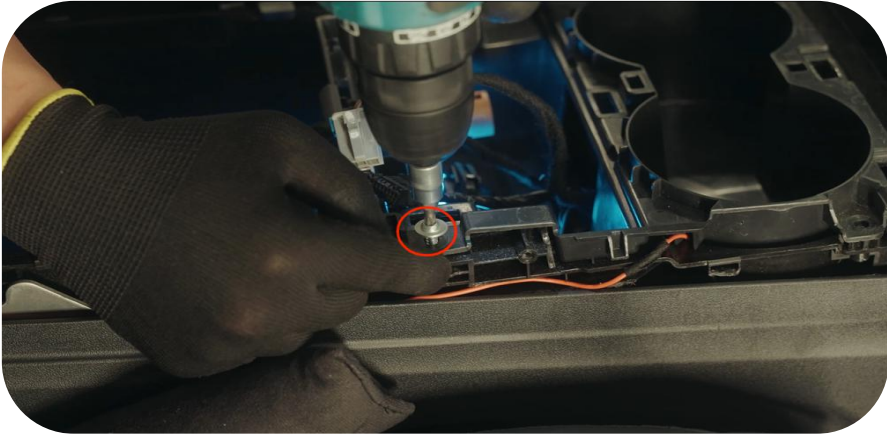


7. Unplug the identification card module

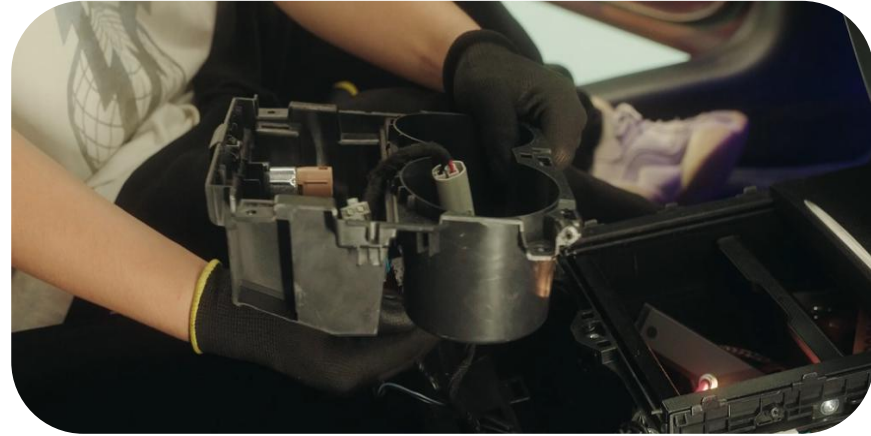


8. Disassemble all the card recognition modules and buckles of the original car trim and transfer them to the screen control panel provided with our products.

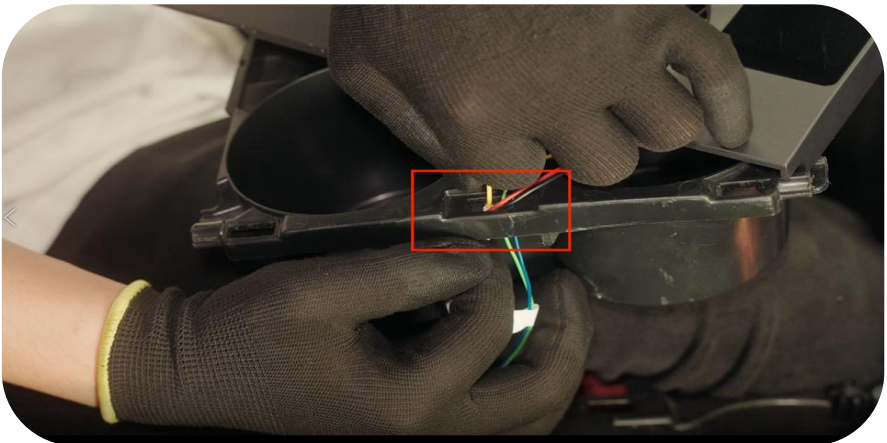
Laser Engraved Ambient Light Instructions



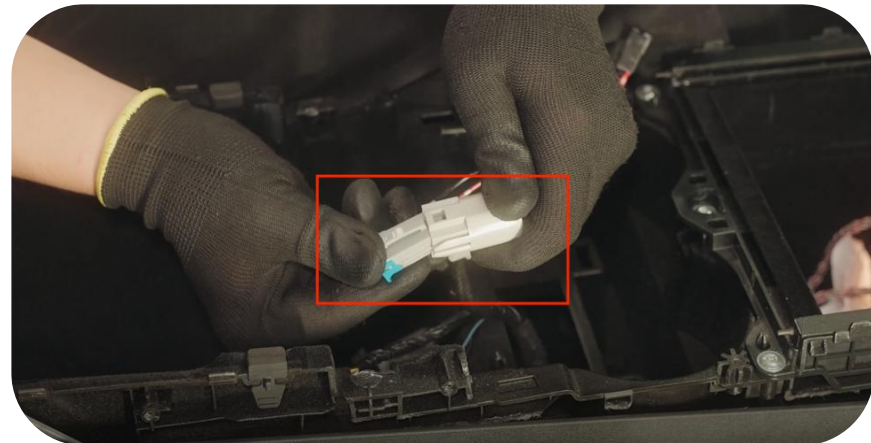
9. Unscrew the four fixing screws on the cup holder and pull out the cigarette lighter plug and the light plug.



10. Take out the cup holder



11. Pass the three wire harnesses of the control panel through the central buckle of the cup holder in sequence .



12. Connect the original car cigarette lighter plug

Laser Engraved Ambient Light Instructions



13. Remove the saddle side guards



14. Remove the triangle plate



15. Remove the rectangular trim panel



16. Remove the door sill side panel clips

Laser Engraved Ambient Light Instructions



17. Remove the instrument lower guard plate



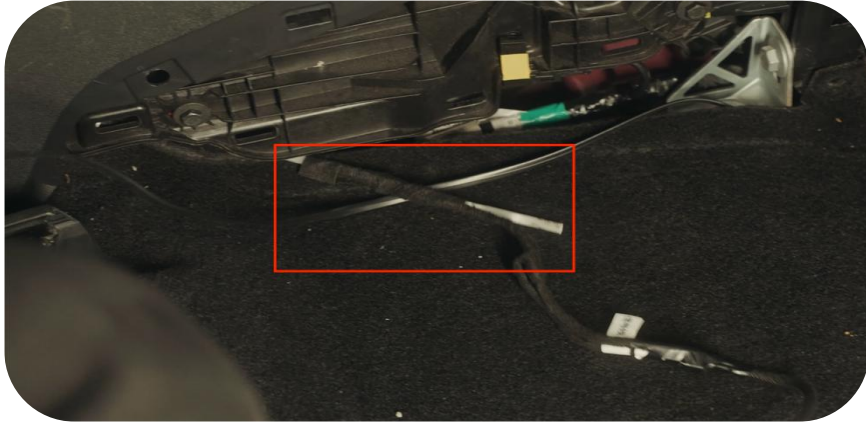
18. Unplug the footrest lamp plug and speaker plug in the guard plate



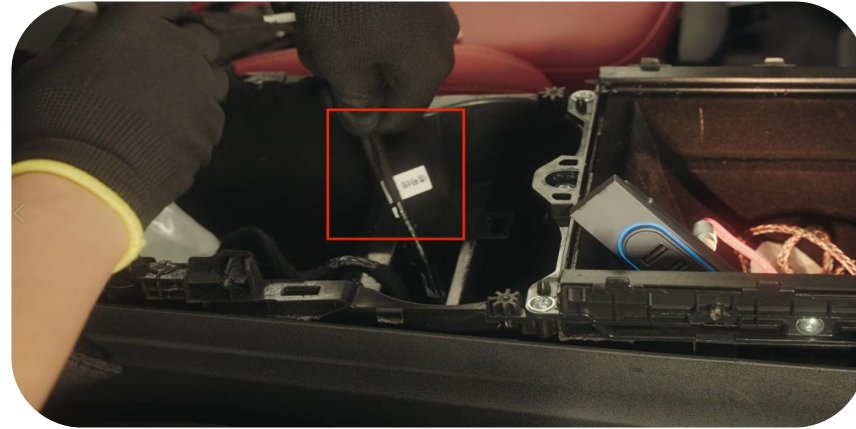
19. Thread the threading strap from the cup holder to the saddle side plate.



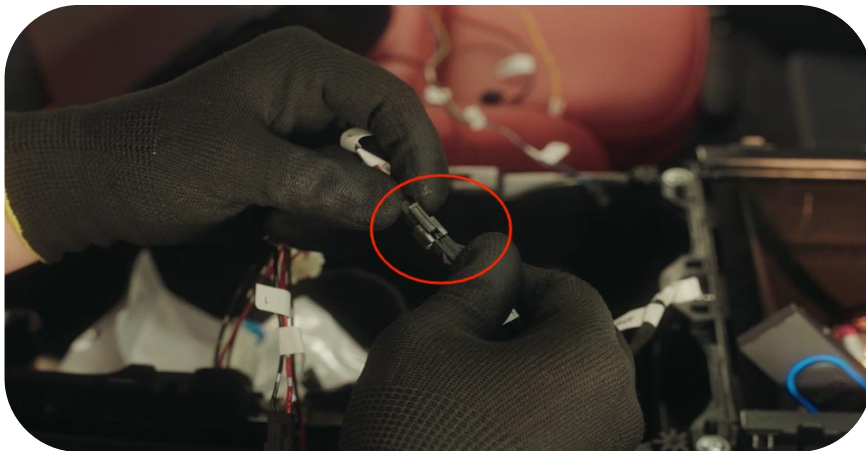
Laser Engraved Ambient Light Instructions



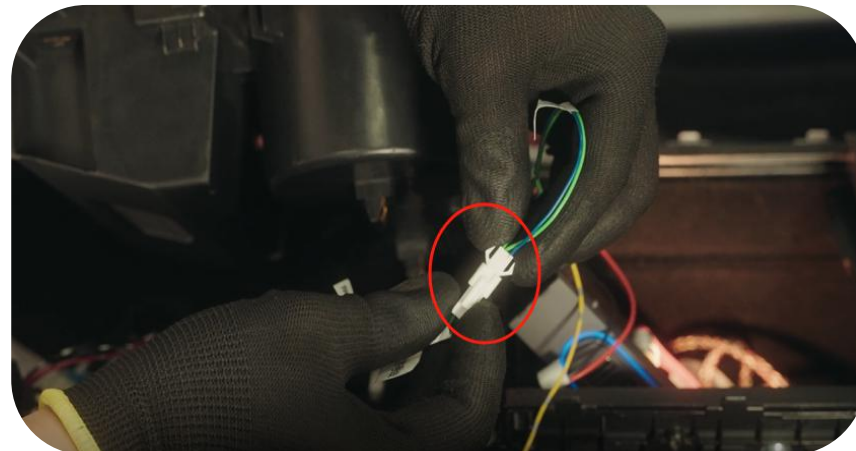
20. Tie the No. 3 and No. 4 plug wire harnesses to the threading strips



21. Pull out the wiring harness to the cup holder position

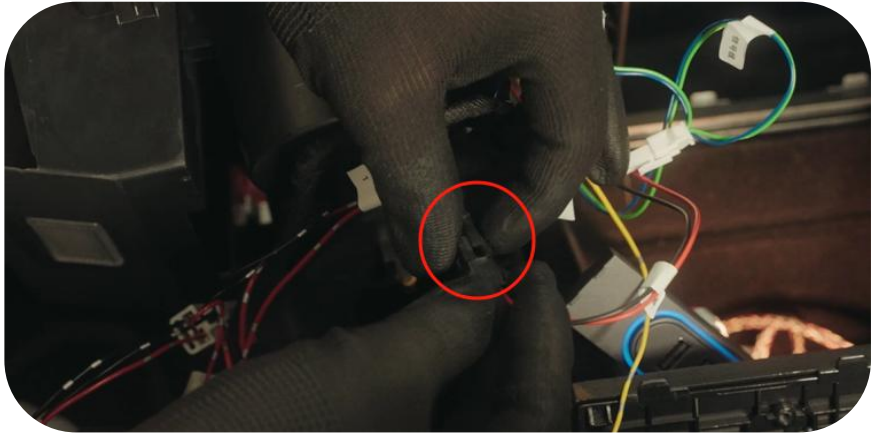


22. No.3 connected to 3 , ambient light power wire connected

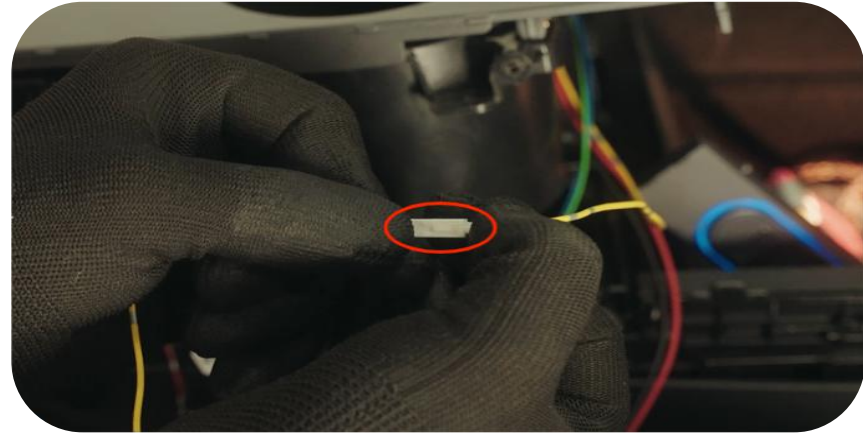


23. No. 4 to 4 , signal line butt connection

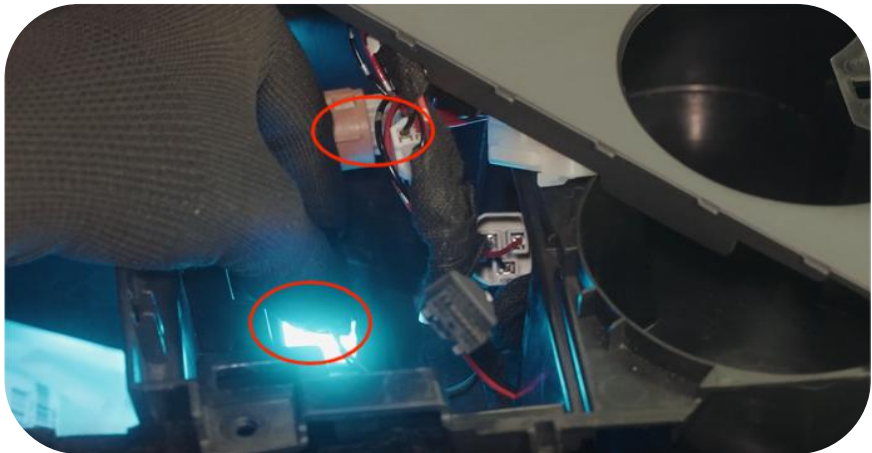
Laser Engraved Ambient Light Instructions



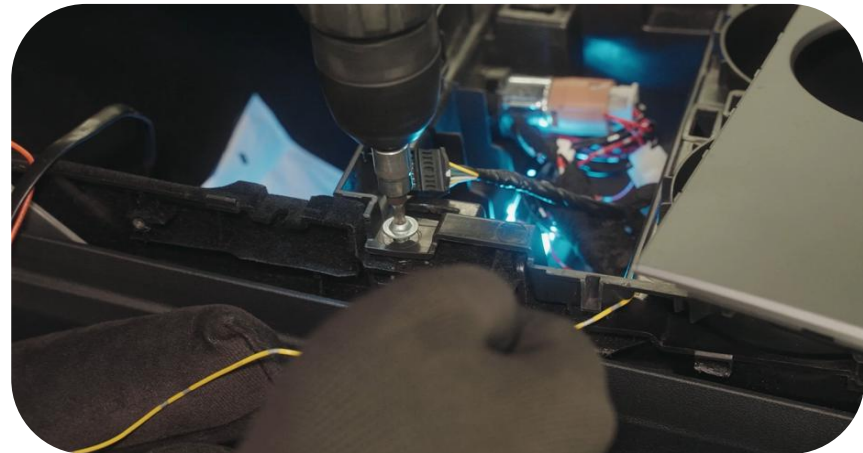
24. No. 1 to 1 , screen power wire docking



25. No. 2 to 2 , ACC wire harness docking

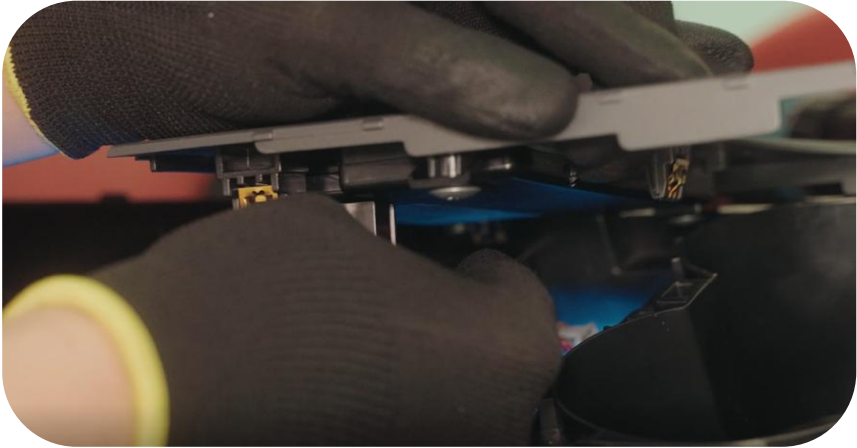


26. Plug back the original car lights and cigarette lighter plugs



27. Arrange the wiring harness and place it under the cup holder. Take out the No. 2 wiring harness and install the cup holder fixing screws.

Laser Engraved Ambient Light Instructions



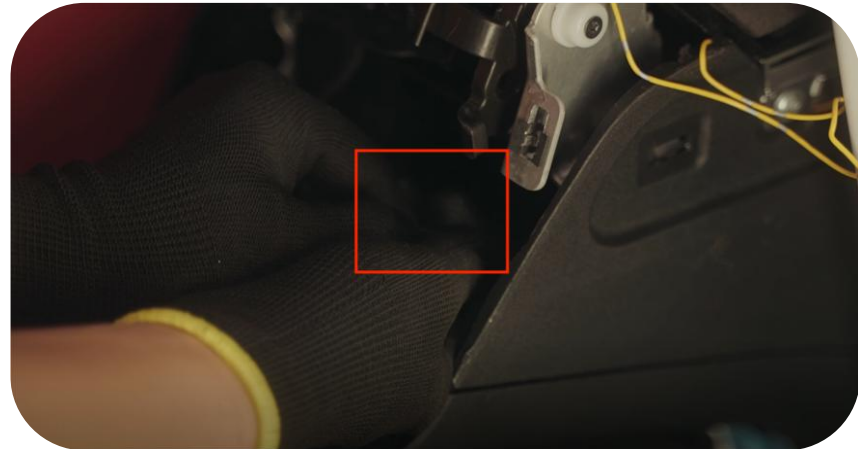
28. Plug in the identification card module plug



29. Run Line 2 along the edge of the saddle to the rear air outlet.

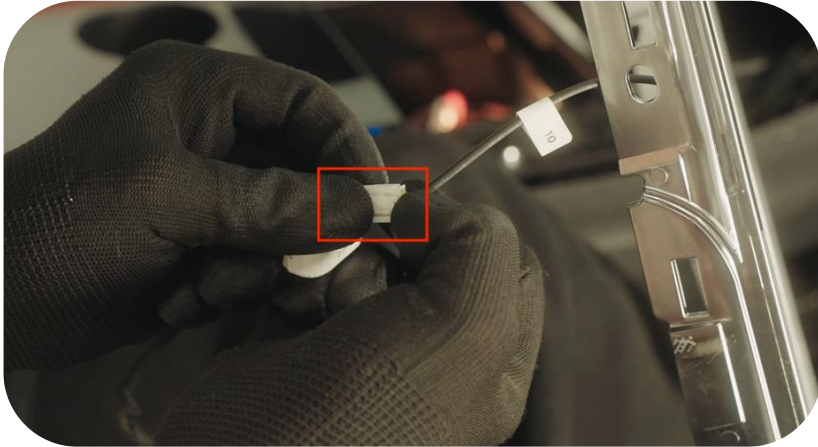


30. Unplug the rear saddle air outlet



31. Connect with the original car signal line plug (The original car plug is on the rear exhaust duct and adhered with tape)

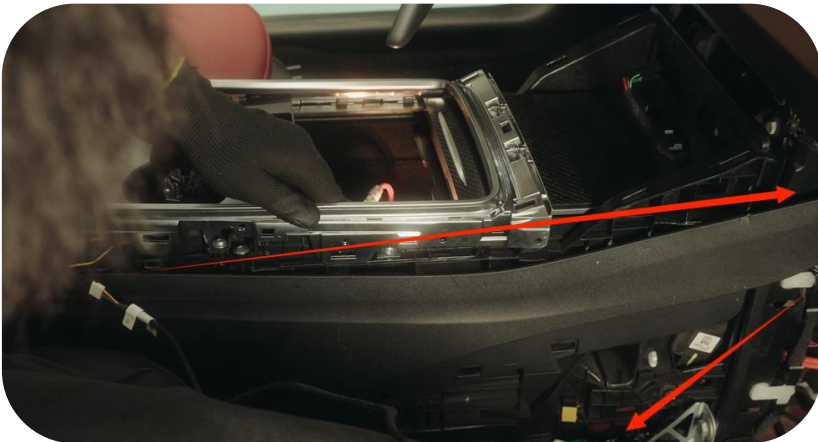
Laser Engraved Ambient Light Instructions



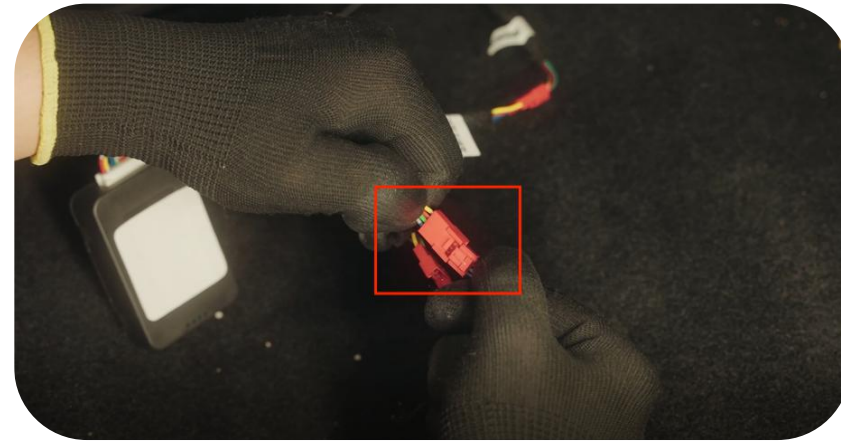
32. Take out the saddle chrome strip of our product (10 connected to 10 saddle lights connected)



33. Install the chrome plated strip and tighten the fixing screws.

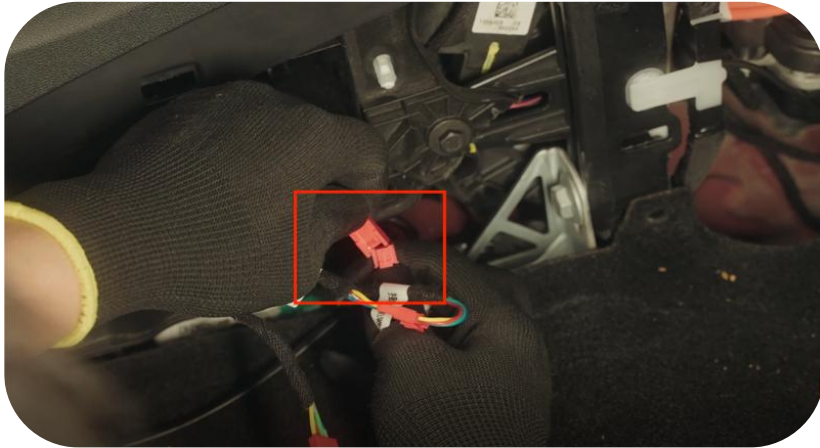


34. Run the wiring harness along the edge to the lower side panel.

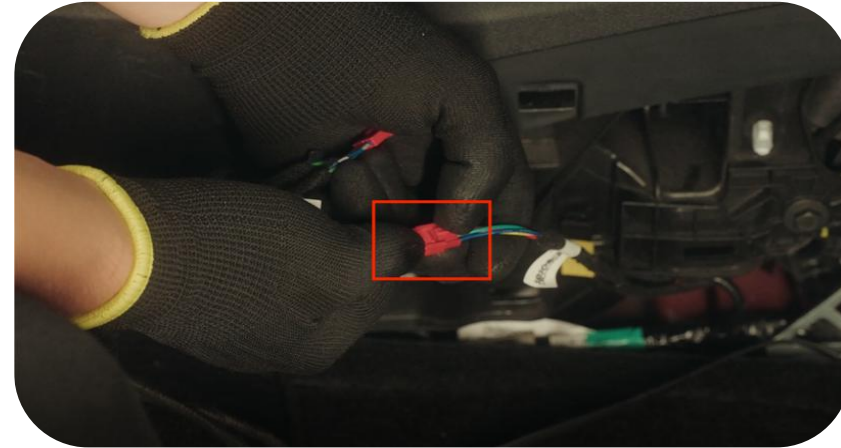


35. No. 5 to 5 , the main wiring harness on the right side of the armrest is connected

Instrument Laser Engraved Ambient Light Instructions



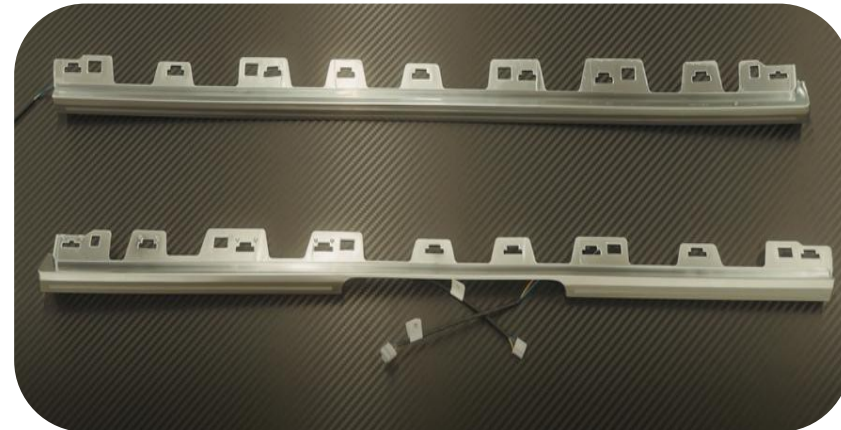
36. 8 to 8 , right front beam docking



37. No. 9 to 9 , right rear wiring harness butt



38. Run the wiring harness along the edge to the lower side panel.

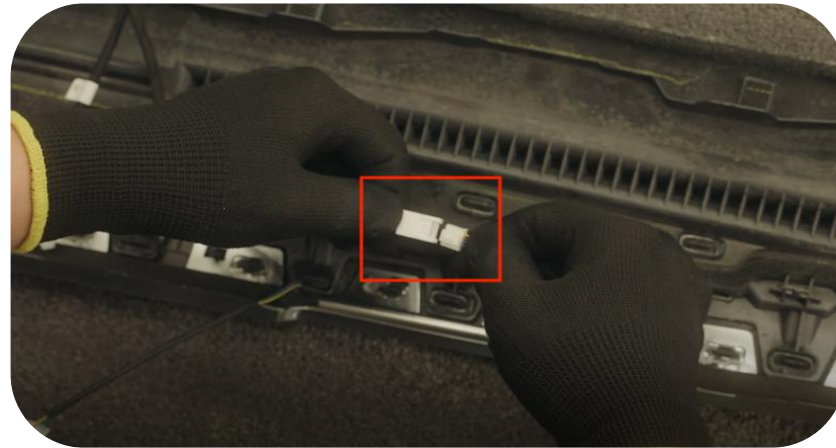


39. Replace the instrument ambient light with the chrome strip on the original car trim panel and fix it.

Instrument Laser Engraved Ambient Light Instructions



40. After installation, as shown in the picture (The carbon fiber is optional, not included)



41. No. 27 to 27 , dashboard ambient light docking

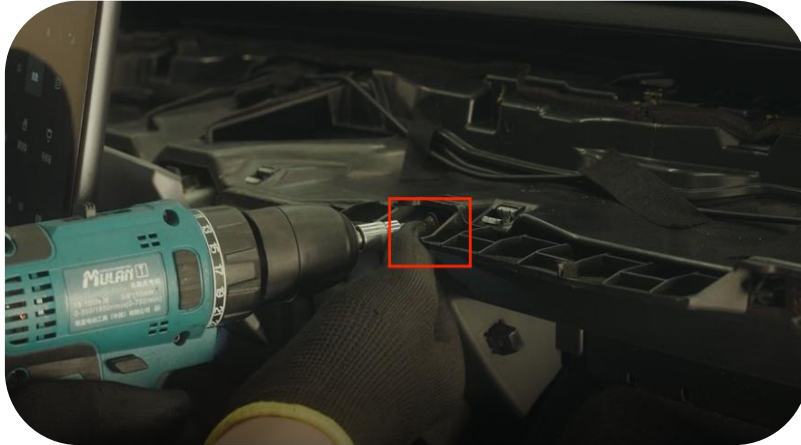


42. No28 to 28 , dashboard ambient light docking



43. 29 to 29 , dashboard ambient light docking

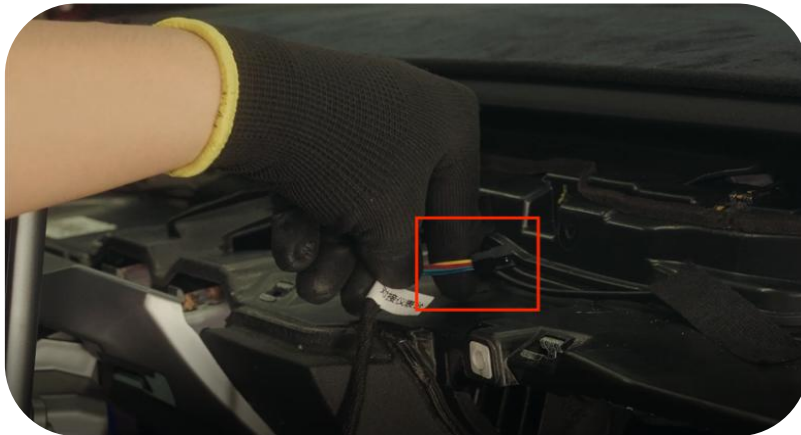
Instrument Laser Engraved Ambient Light Instructions



44. Remove the glove box fixing screws (One has six fixing screws, sleeve T20)



45. Open the glove box and hold it with your feet to prevent the wiring harness from being broken .



46. Connect the No. 23 plug wiring harness of the dashboard ambient light to the top (Connect with the No. 23 plug of the instrument trim panel)



47. After finishing the line, put the glove box back into place.

Instructions for laser engraving ambient lights on the left and right front doors



48. Install the instrument trim panel



49. Pry open the footwell lamp on the lower trim panel of the glove box and replace it with the footwell lamp that comes with the product.



50. 36 to 36 , right front footwell light plug docking

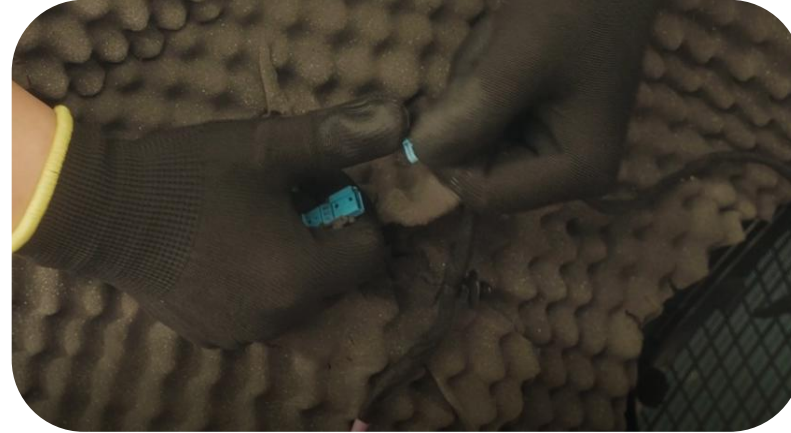


51. Remove the three fixing screws of the front door

Instructions for laser engraving ambient lights on the left and right front doors



52. Pull open the door panel



53. Unplug the original car plug in the door panel and remove the door panel



54. Remove the speaker fixing screws and remove them



55. Open the door and the wiring harness drain pipe of the body

Instructions for laser engraving ambient lights on the left and right front doors



56. Both ends must be opened (Be sure to press back after finishing the line, otherwise water will enter)



57. Use a threading tape to thread it from the top



58. Pass out from below



59. Move the 22 label plug from the car body to the top of the waterproof pipe in the picture

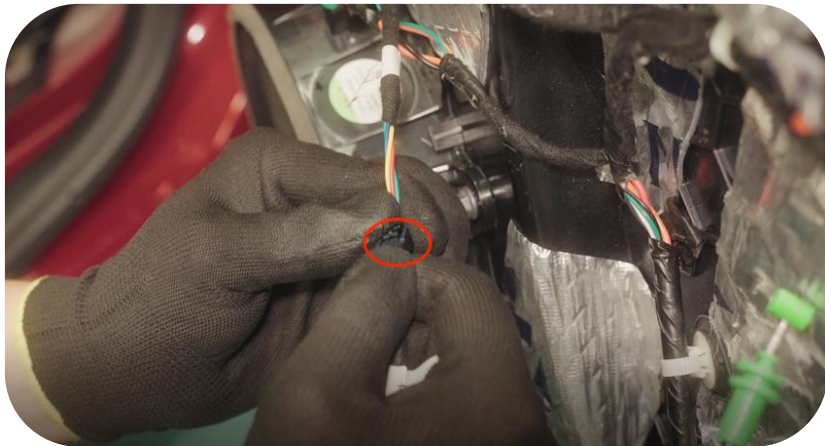
Instructions for laser engraving ambient lights on the left and right front doors



60. Tie the 22 label plug on the threading jumper with tape



61. Use the threading tape to pull the 22 plug wire harness to the speaker position and walk into the car door.



62. Reinstall the speaker to its original position, 22 to 22 right front door light wire

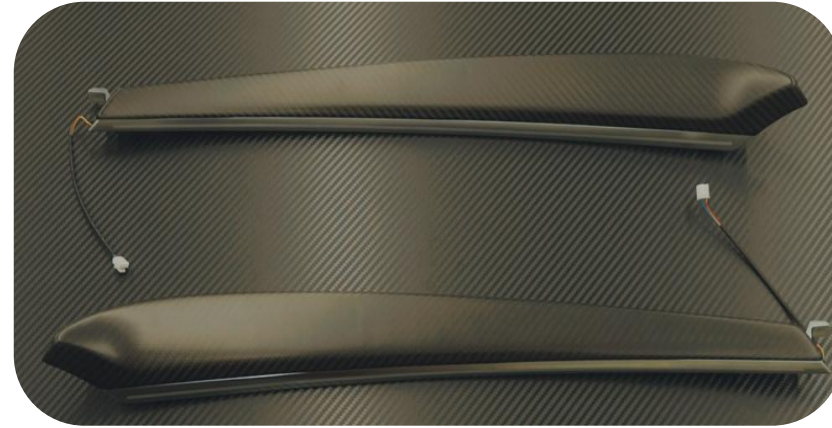


63. Move the 22 label plug from the car body to the top of the waterproof pipe in the picture.

Instructions for laser engraving ambient lights on the left and right front doors



64. Remove the decorative panel on the panel (all snap - on, no screws)



65. Replace the laser-engraved ambient lights with the chrome strips on the original car trim (Carbon fiber here is optional and not included)

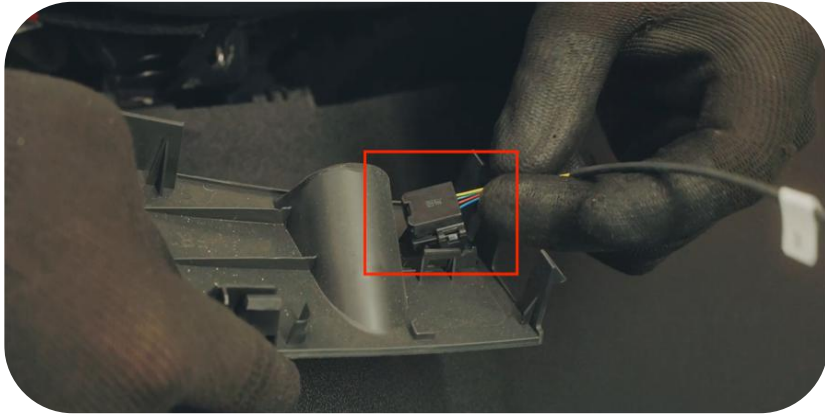


66. Just install it back

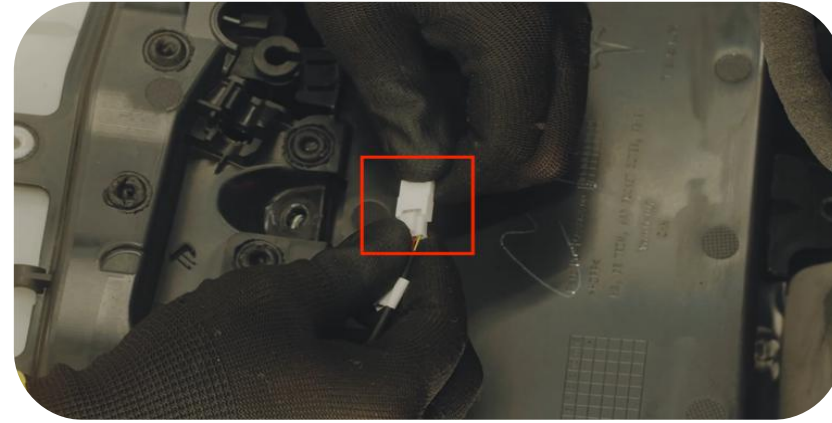


67. Remove the decorative panel above the storage box pocket

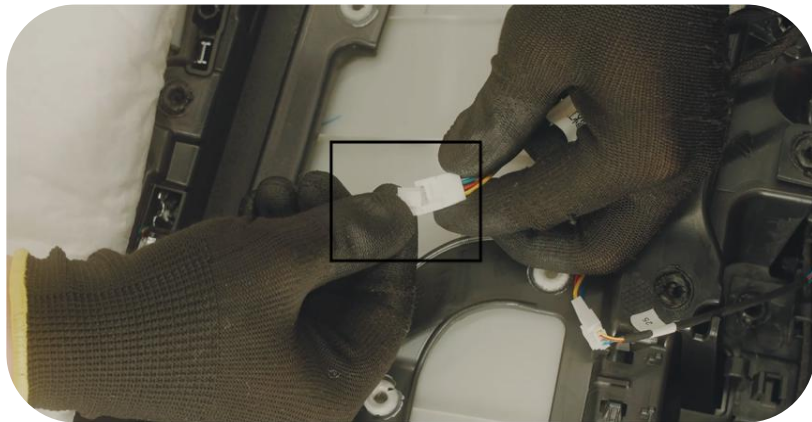
Instructions for laser engraving ambient lights on the left and right front doors



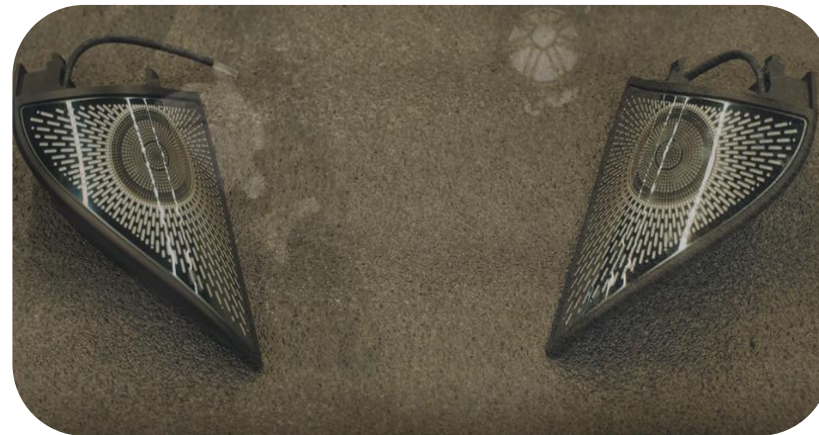
68. Just replace our storage box light with the original



69. 25 to 25 , storage box light wiring harness



70. 24 to 24 , laser engraving ambient contour light wiring harness

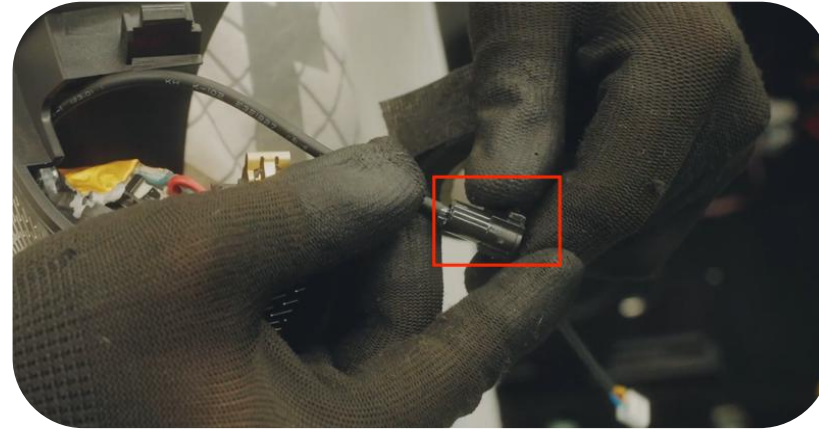


71. Remove the speaker panel above the storage box pocket

Instructions for laser engraving ambient lights on the left and right front doors



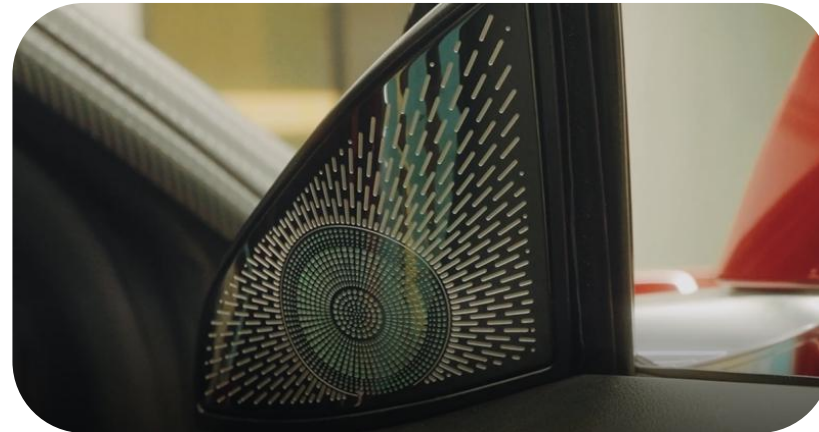
72. Disassemble the speaker from the original car and install it on the speaker luminous cover provided with the product.



73. Put the light guide strip of the speaker cover into the light provided with the product, and then stick it with tape to prevent it from falling off.



74 , 26 , 26 connected to 26 , tweeter light connected



75. Just install it back

Instructions for left and right rear door laser engraving ambient lights



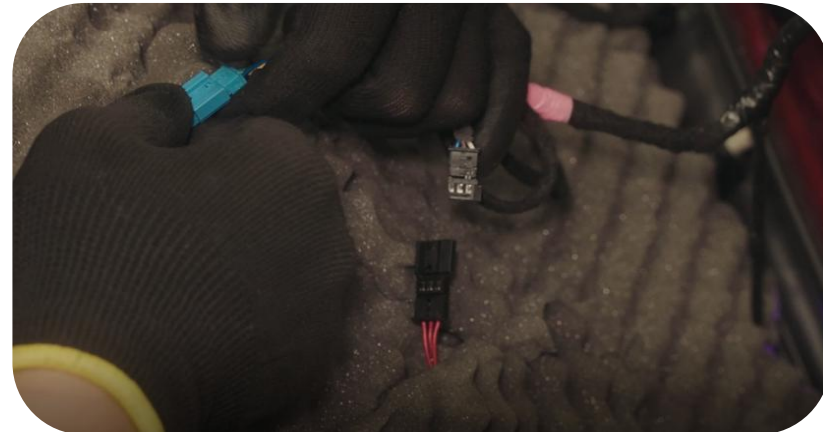
76. Remove the upper and lower trim panels of the B-pillar



77. Unscrew the fixing screws of the back door (the back door only has two fixing screws)

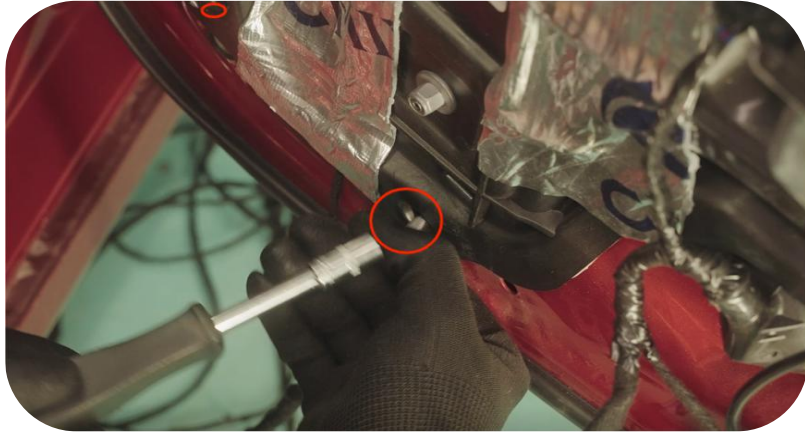


78. Remove the rear door panel



79. Unplug the plug inside the original door panel

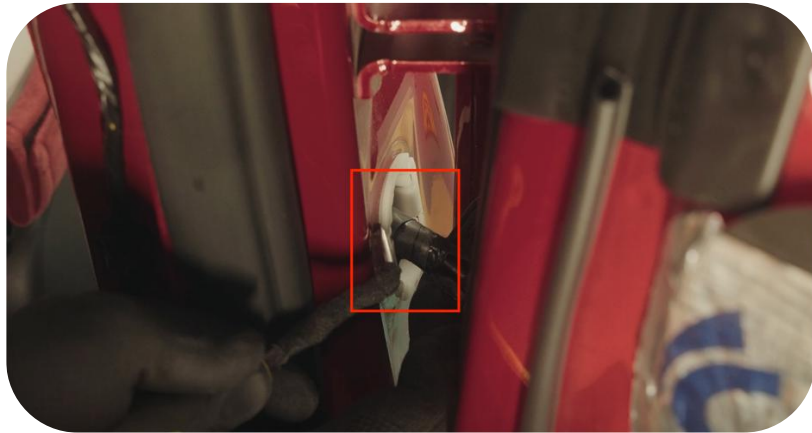
Instructions for left and right rear door laser engraving ambient lights



76. Twist off the fixing screws at the bottom of the glass bracket (2 screws are enough)



77. Remove the water pipe between the rear door and the body

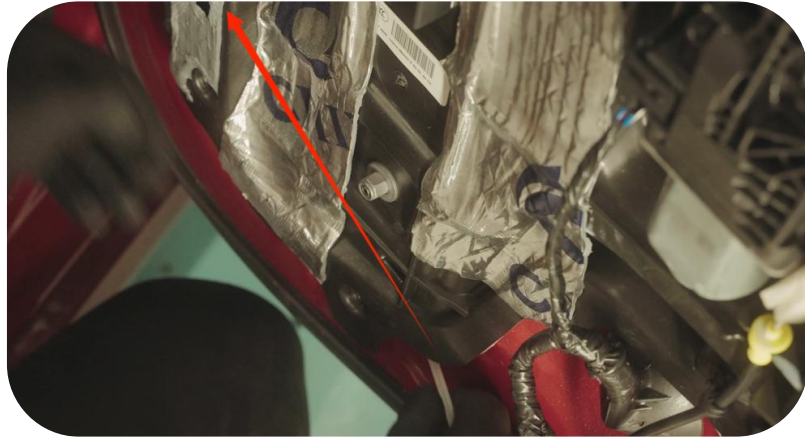


78. Use a tool to open the white clip.



79. Unplug the main plug of the door harness inside

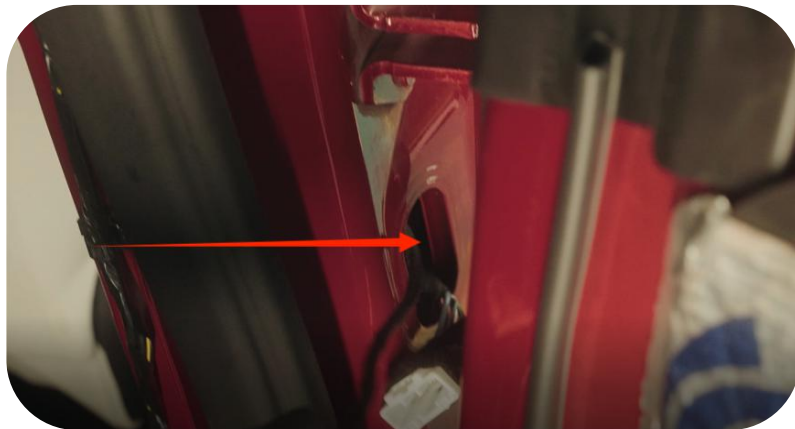
Instructions for left and right rear door laser engraving ambient lights



80. Open it up a little and use the threading tape to pass it along the direction.



81. Come out from the position in the picture (position of waterproof pipe)

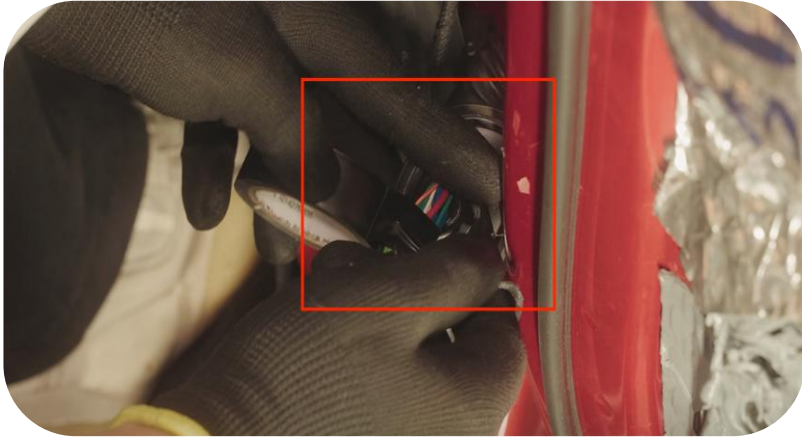


82. No.31 tag plugs pass out from the B-pillar

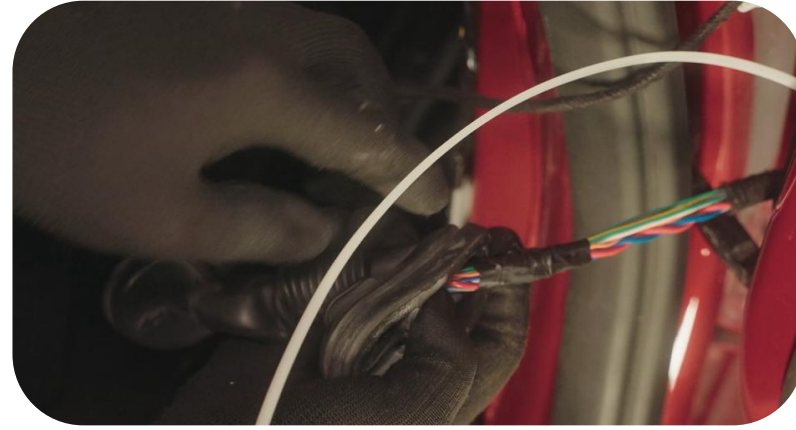


83. Tear off the tape

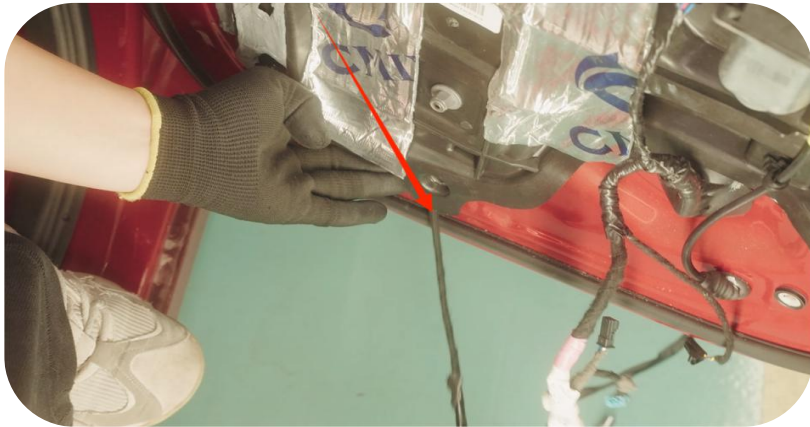
Instructions for left and right rear door laser engraving ambient lights



84. Use tape to tie the No.31 label plug harness on it.



85. After wearing it, tie it to the threading thread



86. After pulling it out directly, fix the two screws back .

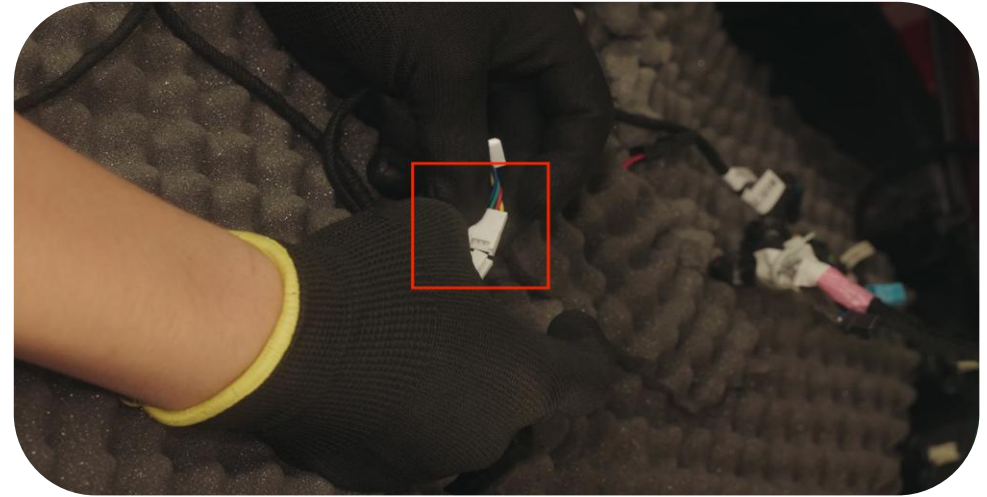


87. Press the ambient light strip into the gap in the rear door panel.

Instructions for left and right rear door laser engraving ambient lights



88. No. 34 connected to 34 , hidden light wire docking



85. No. 35 to 35 , storage box light docking
(The same applies to the left and right, just restore it)

Laser Engraved Ambient Light - Effect Display



Installation Completed Visualization

Laser Engraved Ambient Light -FAQ Troubleshooting Guide

Question	Reason	Solution
Door light doesn't light up	Wrong way of taking power	The cigarette lighter position is plugged into the power source
	Test by pulling out the light strip alone	Light strips in some areas are short circuited
	The voltage is unstable and lower than the working voltage	The power supply voltage needs to be greater than 12v
The color of some areas is abnormal and out of sync.	Light strip short circuit	Check the wiring of the light bar and adjust the independent color to see if it is normal
The touch panel cannot be controlled	The fuse on the power adapter is blown	Replace the fuse on the power adapter cable
	Touchpad damaged	Replace the entire panel
The touch panel cannot be adjusted	Control module is damaged	Replace control module
Power	Ultra low power consumption	6w (much lower than other ambient lights)
Can Model 3 and Model Y be used together?	Can't	The mold of the luminous horn cover is different, but everything else is the same
Product Size	98*14*52.5CM	
Weight	About 3.3-3.8KG	

