

Model 3 / Y 9.6-inch CarPlay Instrument Cluster Head-up Touch Display

NOTE

1. Check whether the product list is complete and damaged before installation
2. The installation instructions may be slightly different from the actual operation. If there is any difference, please contact us or according to the actual situation.
3. Warning: Do not remove any parts by yourself. Any improper operation is not covered by the warranty.
4. Before installing the product, please **turn off the vehicle power and cut off the battery negative pole of the frunk**
5. Please watch the installation video and instructions carefully before installation
6. Please confirm whether the installation and wiring are correct before testing after installation.
7. Check whether the installed product functions normally. If there is any problem, please check whether the plug is plugged tightly
8. Check whether the function of the original vehicle is used normally. If there is any problem, please check whether the plug is plugged in tightly.
9. Please do not install the product if you receive a damaged item. Please take photos immediately and provide them to our after-sales team for confirmation. Photos should be provided that include all parts of the product and can display the damage. (If the product is notified of the damage after installation, claims and reissues will not be accepted, and you will need to purchase the parts again at your own expense.)

Model 3 / Y 9.6-inch CarPlay Instrument Cluster Head-up Touch Display



1. Pry open the cover below the rear air conditioning



2. Connect it to the rear OBD interface, then install the upper cover (if there are multiple plugs, you can conceal them in the lower vent)

Model 3 / Y 9.6-inch CarPlay Instrument Cluster Head-up Touch Display



4. Pull the wiring harness down towards the area below the steering wheel, pry open the cover, and thread it through the hole in the steering wheel as described above.



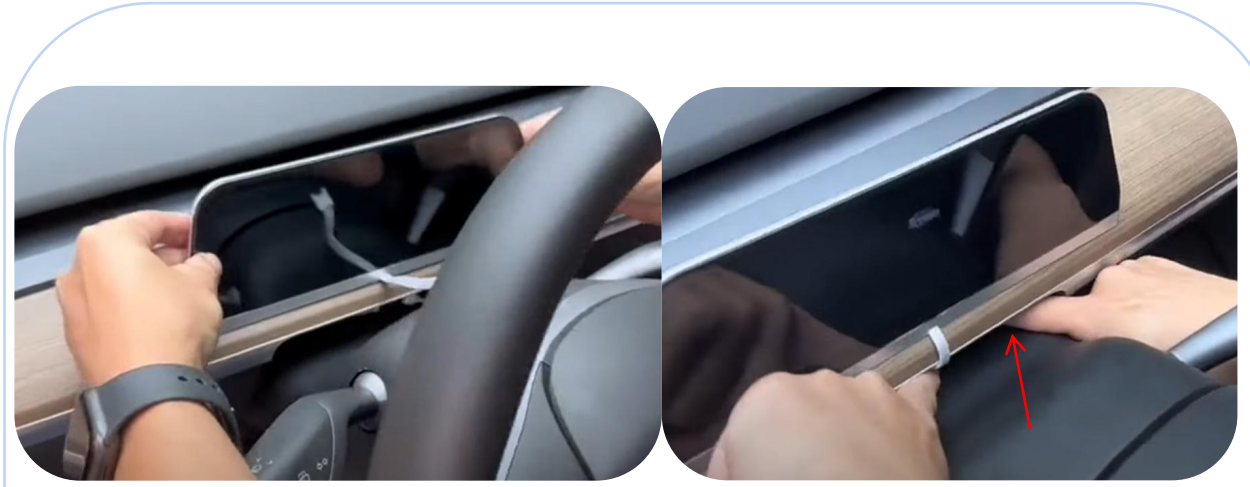
Secure the wiring harness to the trim panel to hide it.

Wiring harness routing diagram

Model 3 / Y 9.6-inch CarPlay Instrument Cluster Head-up Touch Display



5. Adjust the control settings by lowering the steering wheel to its lowest position and turning it all the way to the left



6. Tear off the 3M adhesive, position it in the center, connect the plug, and then conceal the plug.